

MICROZONAZIONE SISMICA

Carta delle indagini

1/2


scala 1:5.000


Regione Emilia-Romagna


Comune di San Polo d'Enza





Regione Emilia-Romagna	Soggetto realizzatore  Direttori tecnici: Dr. Geol. Carlo Caleffi Dr. Geol. Francesco Cerutti Dr. Geol. Matteo Baisi Dr. ssa Olga Brontesi Dr. Geol. Alessandro Ferrari Dr. ssa Geol. Melinda Raimondo	Data Aprile 2025  <b>MS3</b>
---------------------------	---	---------------------------------------

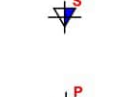
- Legenda
-  Confine comunale

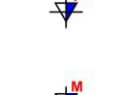
 Aree oggetto di Microzonazione Sismica

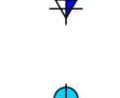
 Stratigrafia zona MS (teorica)

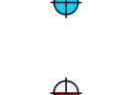
 Sondaggio a carotaggio continuo

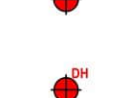
 Prova penetrometrica statica con punta meccanica (CPT)


 Prova penetrometrica dinamica super pesante

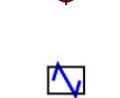
 Prova penetrometrica dinamica pesante


 Prova penetrometrica dinamica media


 Prova penetrometrica dinamica leggera


 Pozzo per acqua


 Trincea o pozzetto esplorativo


 Prova sismica in foro tipo Downhole


 Prova sismica in foro tipo Up-hole

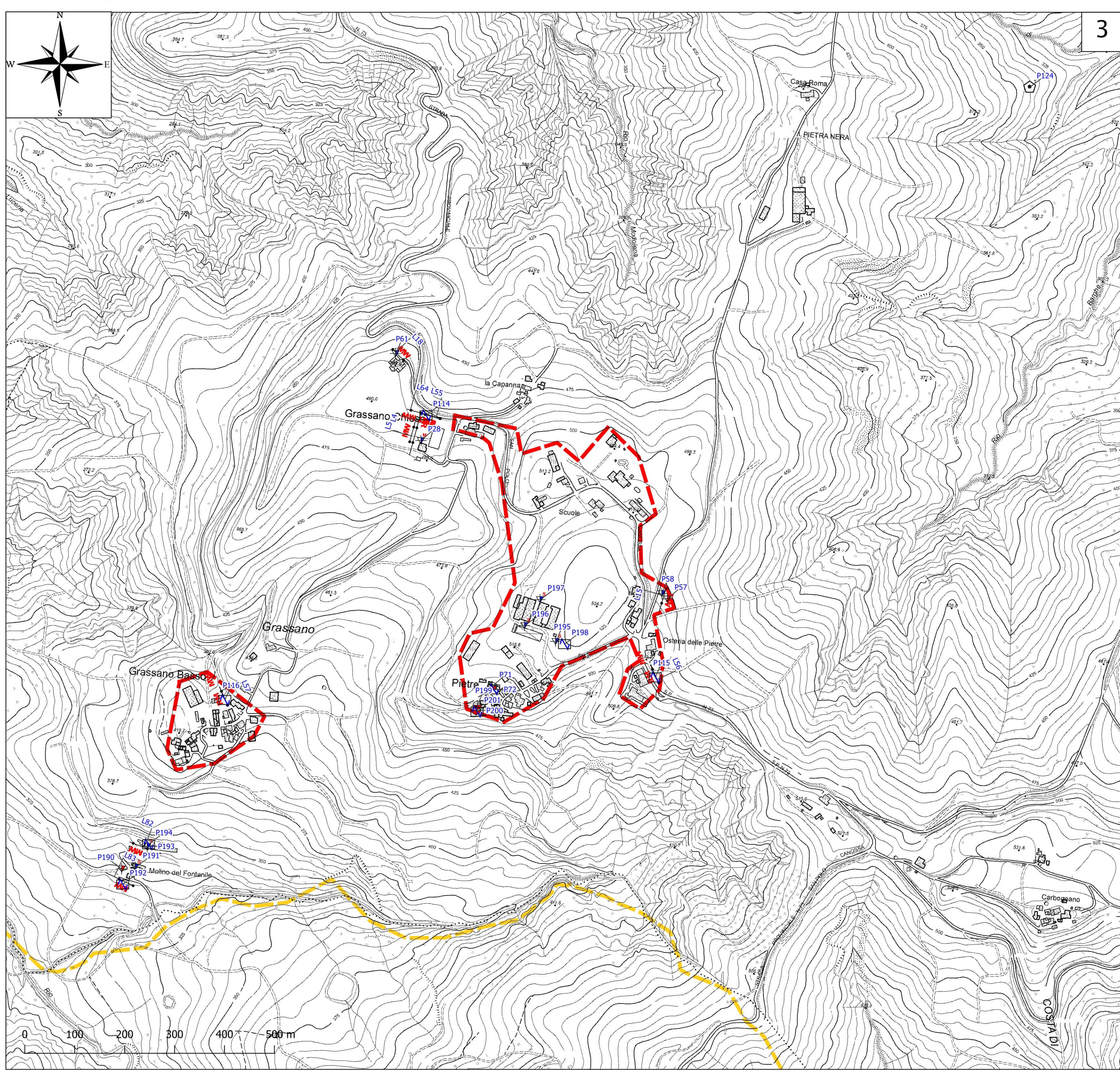
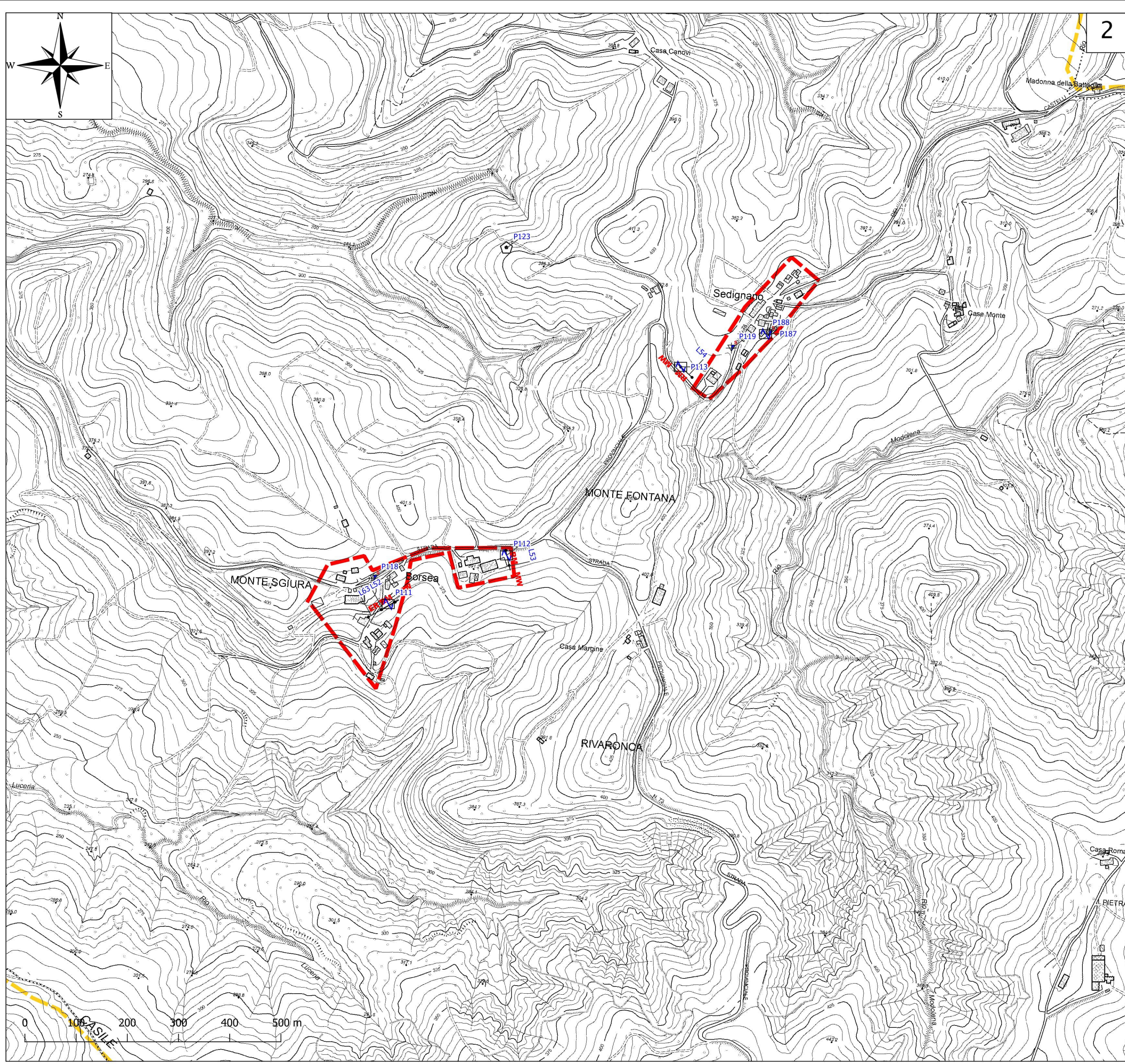
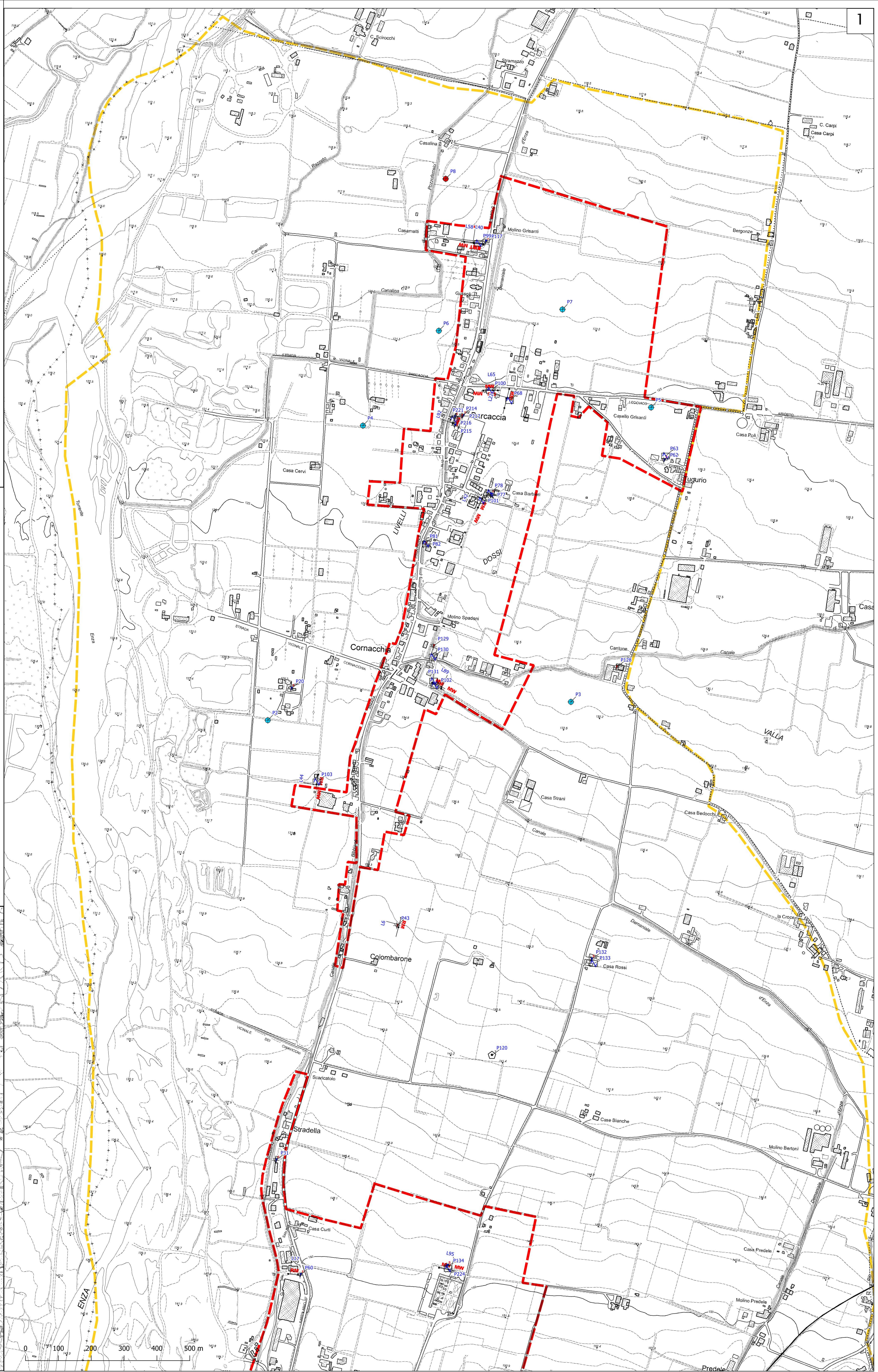
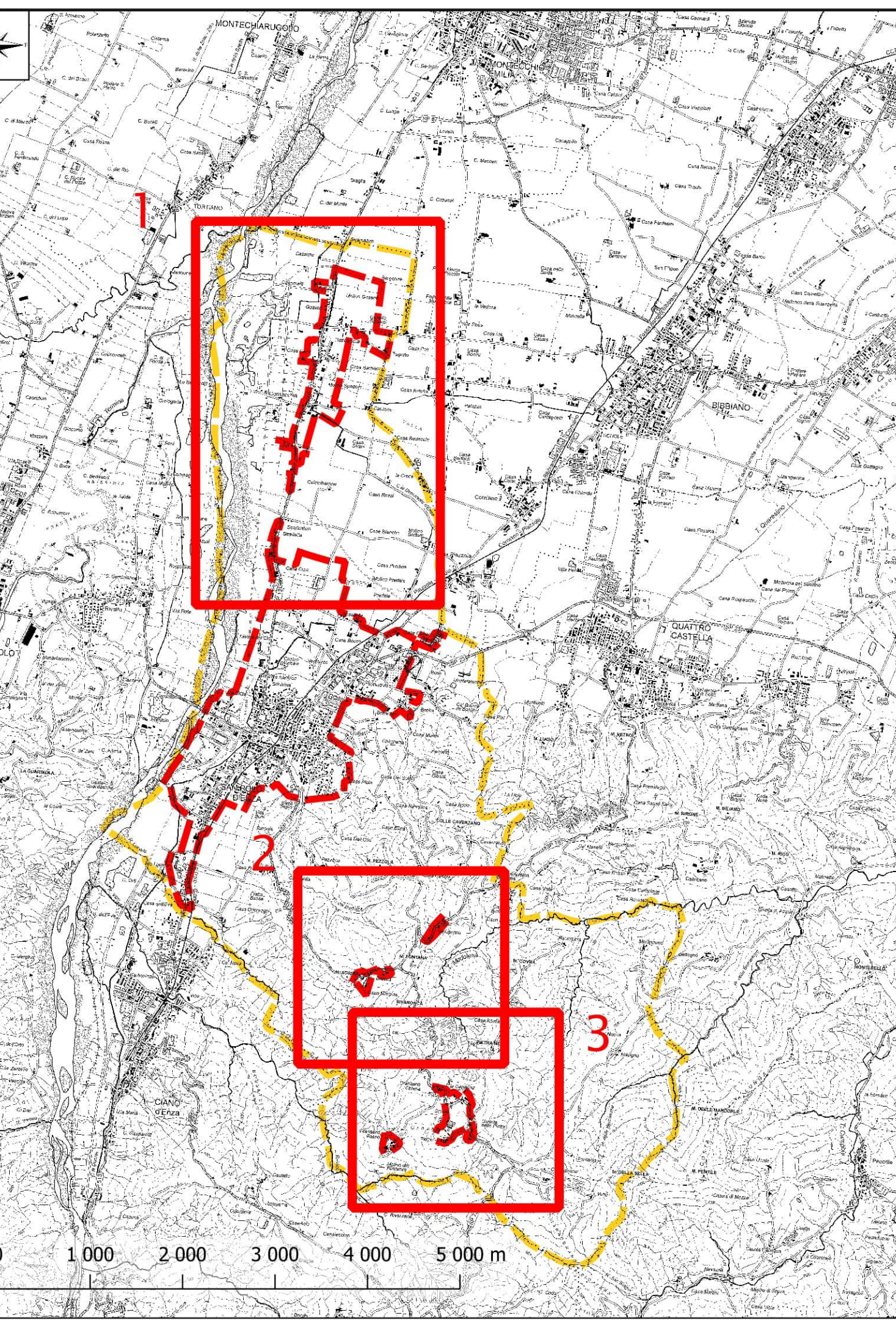
 Stazione microtremore a stazione singola

 MASW

 Prova REFractionMicrotremors

 Profilo sismico a rifrazione

 Tomografia elettrica





# MICROZONAZIONE SISMICA

## Carta delle indagini

2/2  
scala 1:5.000

Regione Emilia-Romagna  
Comune di San Polo d'Enza



Regione Emilia-Romagna	Soggetto realizzatore  Direttori tecnici: Dr. Geol. Carlo Caleffi Dr. Geol. Francesco Cerutti	Data Aprile 2025
---------------------------	--	---------------------

**MS3**

- ### Legenda
- Confine comunale
  - Aree oggetto di Microzonazione Sismica
  - Stratigrafia zona MS teorica
  - Sondaggio a carotaggio continuo
  - Prova penetrometrica statica con punta meccanica (CPT)
  - Prova penetrometrica dinamica super pesante
  - Prova penetrometrica dinamica pesante
  - Prova penetrometrica dinamica media
  - Pozzo per acqua
  - Trincea o pozzetto esplorativo
  - Prova sismica in foro tipo Downhole
  - Stazione microtremore a stazione singola
  - MW MASW
  - RM Prova RéfractionMicrotremors
  - SR Profilo sismico a rifrazione
  - ERT Tomografia elettrica

